

2. ACT-Series

A3 · Professional Models

ACT-707 UHF Four-Channel True-Diversity Receiver



PC control interface allows full-function operations of 64 channels.



★ Main Features :

1. EIA-standard 19" full-rack metal frame presents professional quality of toughness, heat-resistance, and shielding of spurious emission. Built-in four hot-swappable receiver modules provide space saving and the installation time saved.
2. Adopts UHF PLL-synthesized true-diversity receiving with Pilotone and NoiseLock dual-squelch control not only ensure longer operation range, but also eliminate signal dropouts, unstable receiving, and avoid noise interferences from karaoke machines, PC and DVD players.
3. Color LCD panel displays RF/AF signal and diversity metering, transmitter battery fuel gauge. Also allowing manual setting of: Group, Channel, Frequency, Performer's name, Squelch level, Mute On/Off and Address.
4. There is a [SCAN] button on front panel that just one-press on the button will auto scans the preprogrammed interference-free channels and locks at one working channel that is free from interference.
5. Features world's first "ACT" button on front panel that just one-press on the button will automatically locks the transmitter into the same working channel and will never had possible errors or mechanical breakdowns.
6. The first wireless system with output level accurately pre-adjusted equals to the microphone capsule sensitivity so that users don't need to make any adjustment and still to obtain the optimal setup on output level and dynamic range.
7. Built-in four-channel antenna divider can use one pair of antenna or connect external extension antennas and boosters to increase operating range.
8. Detachable switching power supply assures stable performance in the range of 90~264V AC power input and its ventilation design assures safe temperature and stable operation of systems 24-hour a day.
9. A monitoring headphone jack on front panel allows monitoring audio output of each individual channel.
10. Other than operating manually, with the highest intelligent PC control function, ACT series enables not only maximum 64-channel connections, but also separate operation for each built-in function from as far as 300 meters and all it takes is just a telephone cable.
11. The best four-channel receiver that is easy installation and operation, stable performance, and outstanding features ensure the most satisfactory wireless experience under all professional applications.
12. Matching to premium model ACT-707H handheld wireless microphone and ACT-707T body pack transmitter with LCD display and uses 2 AA batteries; If no budget restriction, you can choose professional magnesium alloy models ACT-707HM & ACT-707TM which will bring you unbeatable and high level of vocal performance.
13. Products carry various patents and comply with telecommunication and safety regulations.

ACT-Series Accessories:

1. ACT-707F Four-Channel Receiver Frame



Front Panel



Internal layout

★ Main Features :

1. EIA-standard 19" full-rack metal frame and accepts 1~4 receiver modules.
2. Built-in 4-channel antenna divider, audio mixer and switching power supply.
3. A monitoring headphone jack with channel selector and volume control on the front panel.
4. Rear panel consists of MIC/LINE level switch, mixed/separate output switch, balanced XLR outputs for each individual channel, PC-control interface connector, and AC/DC power input socket. Rack-mounting accessories are available for rack case installation of receiver frames.
5. Built-in antenna divider uses just one pair of antenna after mixing antennas of each channel and antennas can be directly installed on the front or rear panel. Addition of extension antenna and boosters to the system will enhance receiving efficiency and receiver's antenna connectors will directly provide booster bias.
6. The mixed audio signals of four channels will output from unbalanced output jack.
7. Detachable switching power supply assures stable performance in the range of 90~264V AC power input and its ventilation design assures safe temperature and stable operation of systems 24-hour a day.

2. ACT-Series

2、ACT-707M

Color LCD Hot-Swappable UHF Receiver Module



★ Main Features :

1. World's first color LCD panel with multi-function, clearer and more definite display enables easy operation and distinguishes for users.
2. First in the market to introduce hot-swappable modular design allows quick and direct installation to ACT-707 mainframe and immediate use. Ensures easy operating, servicing, renew and upgrade flexibility.
3. PC control via comprehensive MIPRO PC-control software. Digital controlled and real-time programmable LCD panel provide unprecedented flexibility and commands.
4. Adopts UHF PLL synthesized design where each frequency band covers 25 MHz bandwidth and 100 non-interference channels are preset into 9 different groups. Utilizes AutoSCAN button and just one-press on the button will scan from preset non-interfered channels and lock automatically at a working channel that is free from interference.
5. Advanced design in spurious emission shielding; ultra high sensitivity; extreme low noise & spurious emission; diversity reception; Pilotone & NoiseLock dual squelch controlled prevents unwanted signals and random noise interferences.

3、ACT-707SD

MIPRO PC-Control Interface



★ Main Features :

The most advanced MIPRO PC controlling interface uses a MIPRO DV connector, the exclusive driver for ACT systems, to link to an IBM-compatible PC and remotely control up to 64 receiver modules simultaneously from 300 meters away. The controlling software has a built-in high performance spectrum analyzer allows direct setup of non-interference frequencies and monitors the wireless environment for all operating channels and interference signals. In addition, all receivers' settings within the network can be freely setup and saved while default setting can be kept. The software is also capable of monitoring transmitter battery status, AF/RF & Antenna A/B strength. Features like signal dropouts recording system where history of signal path is recorded for analysis and real-time program editing, multi-function and status display are also included for your convenience. Such powerful, complete, and easy-to-use software also include a user-friendly "Help" section for your reference.



PC control interface allows full-function operations of 64 channels.



Figure 1 : Main screen

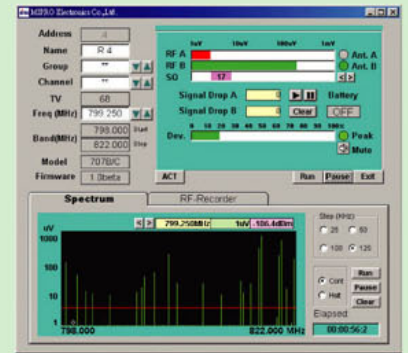


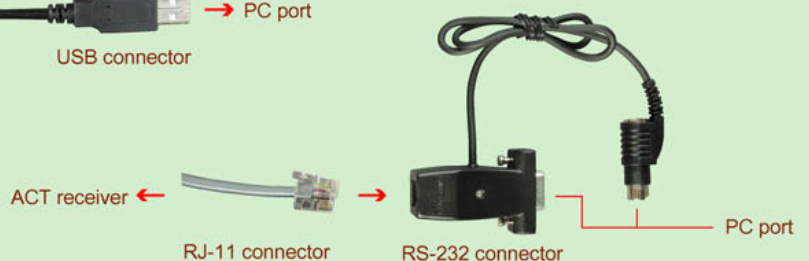
Figure 2 : Detail page

4、Accessories for PC control:

1. MIPRO DVU



2. MIPRO DVJ



3. Network Cables

